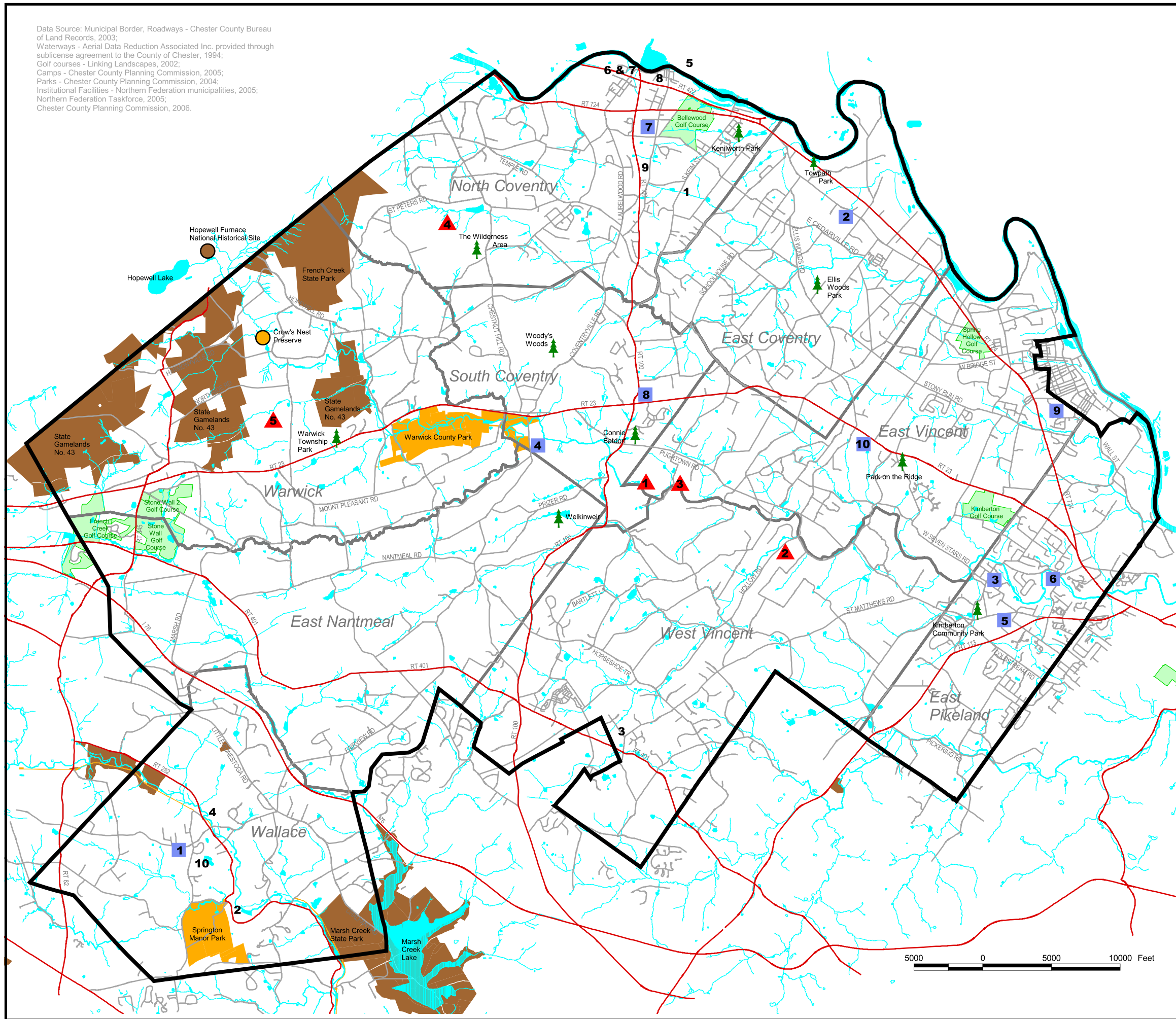


Data Source: Municipal Border, Roadways - Chester County Bureau of Land Records, 2003;  
 Waterways - Aerial Data Reduction Associated Inc. provided through sublicense agreement to the County of Chester, 1994;  
 Golf courses - Linking Landscapes, 2002;  
 Camps - Chester County Planning Commission, 2005;  
 Parks - Chester County Planning Commission, 2004;  
 Institutional Facilities - Northern Federation municipalities, 2005;  
 Northern Federation Taskforce, 2005;  
 Chester County Planning Commission, 2006.

# Map 10-1: Recreation Resources



- 1 Public Institutional Facilities (see Chapter 10)
- ▲ Camps and Campgrounds (see Chapter 10)
- Golf Courses
- 1-10 Neighborhood Park (see Chapter 10)
- ▲ Community Park and Recreation Facilities
- Sub-Regional Park and Recreation Facilities
- Regional Park and Recreation Facilities

### BASE FEATURES:

- Study Area Boundary
- Municipal Borders
- Major Roads
- Roads
- Waterways (Rivers, Streams, Ponds)

This map was digitally compiled for internal maintenance and developmental use by the County of Chester, Pennsylvania to provide an index to parcels and for other reference purposes. Parcel lines do not represent actual field surveys of premises. County of Chester, Pennsylvania makes no claims as to the completeness, accuracy or content of any data contained hereon, and makes no representation of any kind, including, but not limited to, the warranties of merchantability or fitness for a particular use, nor are any such warranties to be implied or inferred, with respect to the information or data furnished herein.

No part of this document may be reproduced, stored in a retrieval system or transmitted in any form or by any means, electronic, mechanical, photocopying, recording or otherwise, except as expressly permitted by the County of Chester, Pennsylvania.

## Regional Resource Protection Plan

Federation of Northern Chester County Communities



Map 10-1